

## SIEMENS AXIOM Aristos now installed at IDC

### Excellent image quality with exceptionally low radiation dose

**AXIOM Aristos Digital X-Ray** is a fast and flexible imaging system with ceiling-mounted X-ray tube and Dual 43x43 cm Digital detectors. With these components, an extensive array of examinations can be performed. AXIOM Aristos meets the clinical demands of radiography.

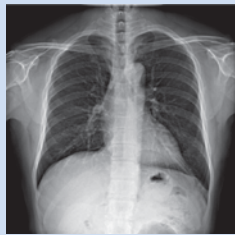
- o Fast, flexible with reduced **radiation dose** to patient through excellent DR detectors
- o Fulfilling a **wide range** of radio graphic examinations
- o **Excellent image** quality with Diamond View 3Kx3K
- o Large 43 cm x 43 cm **Digital detector** coverage
- o **Reduced repeat** examinations
- o **Brilliant images** with reduced dose
- o **Consistently optimal** exposure
- o **Soft Image** copy available

We are pleased to inform you that with the addition of this latest state of the Art, fully automatic Dual Detector X Ray System from Siemens, IDC has further brought down the radiation exposure to fraction, of what other systems offer.

Just to quote that an x ray Chest that was done in 16 to 20 mAs can now be done at a dose of around 2 mAs, which is fraction of that actual dose. This will help us save the patient from x ray hazards of over exposure.



Pelvis, a.p.



Diamond View

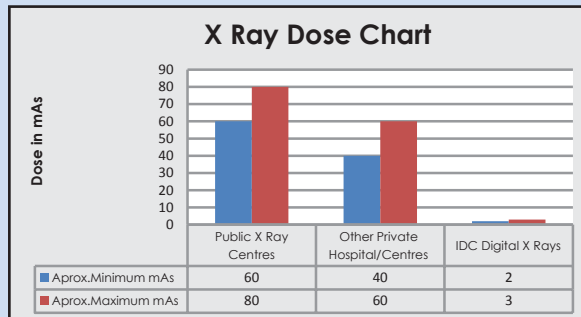


Diamond View



Skull

### Low Radiation dose



# SIEMENS

# AXIOM Aristos

Pushing the limits  
of fully automatic  
radiography (X-Ray)



**Designed for dose efficiency and patient comfort**



**ISLAMABAD DIAGNOSTIC CENTRE**  
**IMAGING & LAB SERVICES**

Main Lab: 13-A Kohistan Road, F-8 Markaz, Islamabad.  
Tel: +92-51-226 3737, 226 3939, 225 1212 Fax: 051-228 1313  
Email: info@idc.net.pk www.idc.net.pk

